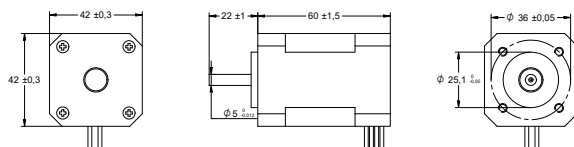
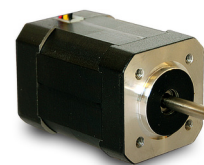


DRAWING (mm)



PHOTO

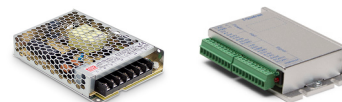


MODEL NO. DESIGNATION

B4260 - VOLTAGE

Example: B4260-12

ACCESSORIES



● C = customizations are offered on demand even for smaller quantities. Typical customizations are indicated with a green dot at column end. Please contact us for any customization request.

BRUSHLESS DC MOTOR DATA		B4260-12	B4260-24	C
Nominal voltage	V	12	24	
Commutator hall voltage	V	5 ~ 24	5 ~ 24	
No load speed	rpm	7100	6500	
No load current	A	0.6	0.5	
Nominal speed	rpm	4000	4000	
Nominal torque	mNm	130	130	
Nominal current	A	7.4	3.5	
Start/Stall torque	mNm	350	380	
Efficiency	%	59	62	
Nominal power	W	52	52	
Terminal resistance	Ω	0.18	0.8	
Terminal inductance	mH	0.23	1.2	
Torque constant	mNm/A	17	36	
Rotor inertia	gcm ²	48	48	
Bearing type		Ball bearing		
Axial play at axial load < 3.5 N	mm	0.08		
Axial play at axial load > 3.5 N	mm	0.08		
Radial play	mm	0.02		
Max. dynamic axial load	N	10		
Max. radial load ¹	N	28		

NOTES

1. 10 mm from flange.

OTHER BRUSHLESS DC MOTOR DATA		B4260-12	B4260-24	C
Number of pole pairs		4		
Number of phases		3		
Weight	g	300		
Operating temperature	°C	-20 to 50		
Max. winding temperature	°C	130		
Motor insulation class		B		
IP rating		IP40		
Hall sensors and power harness length	mm	400		●
Power harness		UL1430 AWG20		
Hall sensors harness		UL1430 AWG26		
Shaft length from flange	mm	22		●
Shaft diameter ø	mm	5		
Service life	h	10000		
Manufacturing standard		ISO9001 ISO14001 TS16949		

CABLE AND PIN CONFIGURATION

Power		Hall		C
Phase	Cable color	Phase	Cable color	
U	YEL	HU	BLU	
V	RED	HV	GRN	
W	BLK	HW	WHT	
		+5V	RED	
		GND	BLK	